



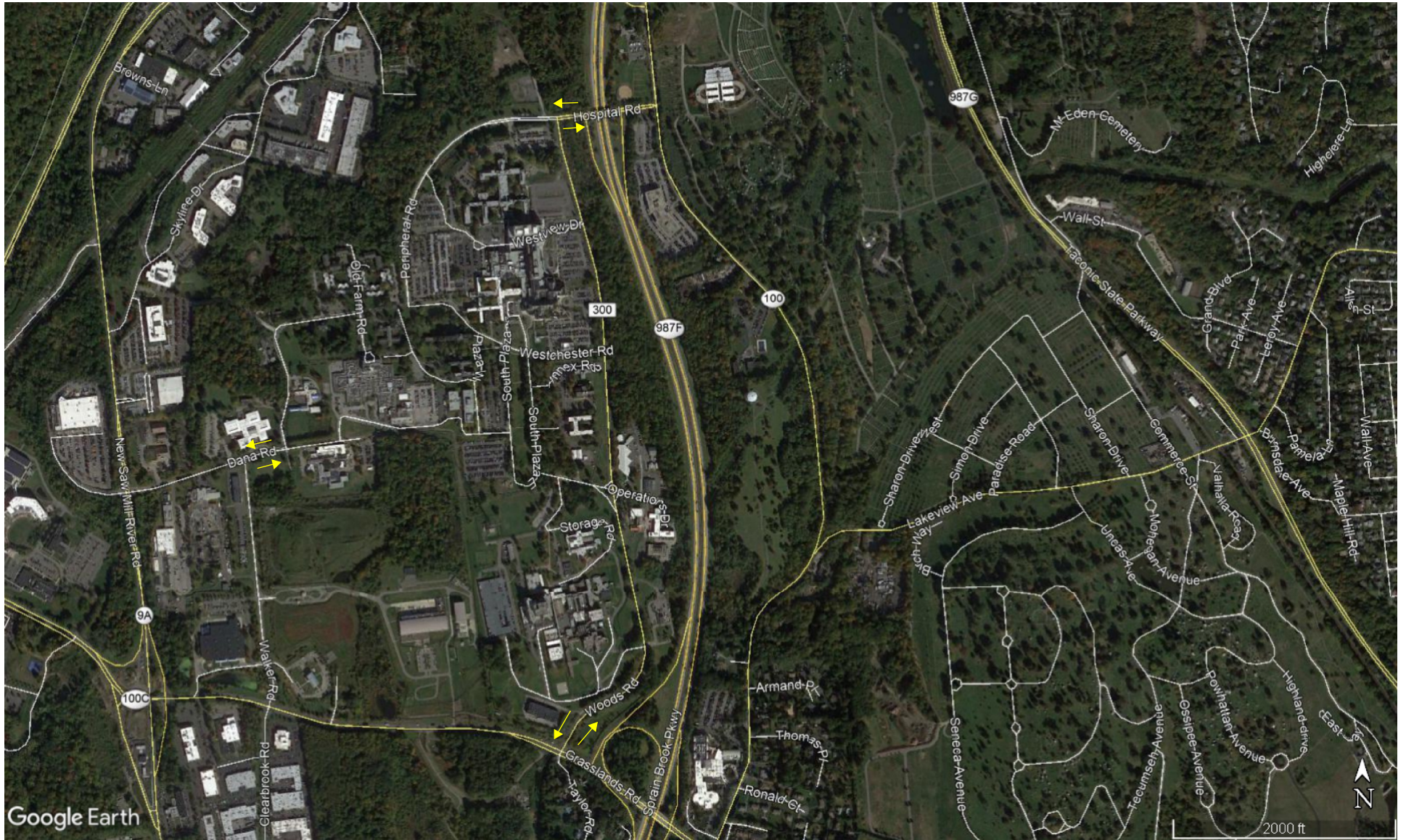
***NORTH 60***

---

**ATTACHMENT 18**

**WMC, NYMC, WCDOC**

**INTERPLAY CREDIT**



**INTERNAL TRIP ANALYSIS**

**EXISTING WMC, NYMC, WCDOC CAMPUS**

EXISTING TRAFFIC VOLUMES	WEEKDAY PEAK AM HOUR <sup>(1)</sup>			WEEKDAY PEAK PM HOUR <sup>(2)</sup>		
	ENTRY	EXIT	TOTAL	ENTRY	EXIT	TOTAL
HOSPITAL ROAD	855	238	1093	253	695	948
DANA ROAD	303	101	404	59	410	469
WOODS ROAD	325	148	473	119	305	424
<b>TOTAL</b>	<b>1483</b>	<b>487</b>	<b>1970</b>	<b>431</b>	<b>1410</b>	<b>1841</b>

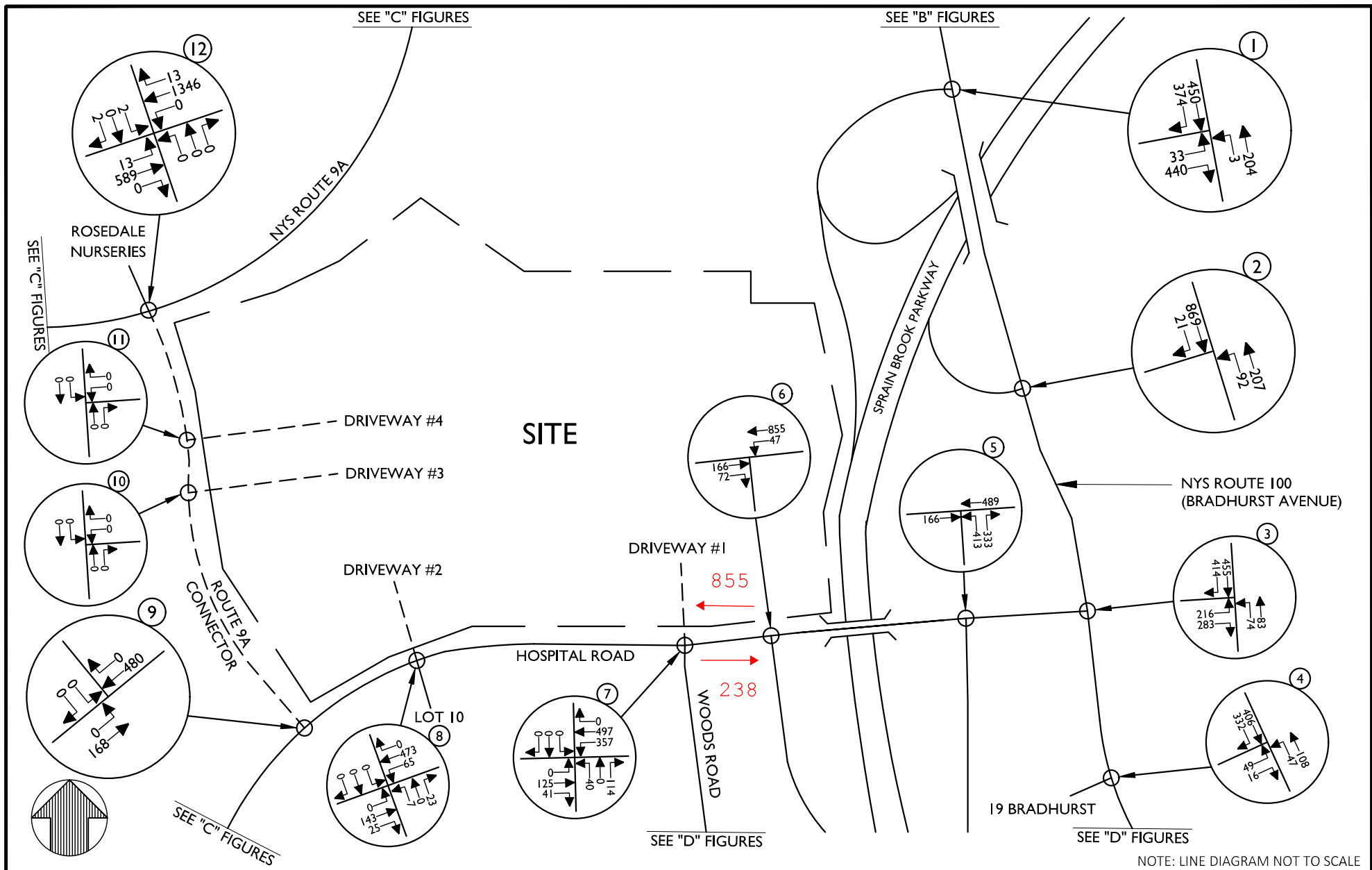
(1) WEEKDAY PEAK AM HOUR - FIGURES NO. 8-A, 8-C, 8-D

(2) WEEKDAY PEAK PM HOUR - FIGURES NO. 9-A, 9-C, 9-D

**PROPOSED NORTH 60**

PHASE 1 - "INTERPLAY"	WEEKDAY PEAK AM HOUR			WEEKDAY PEAK PM HOUR		
	ENTRY	EXIT	TOTAL	ENTRY	EXIT	TOTAL
HOTEL	10	7	17	11	11	22
OFFICE / BIO-TECH	69	15	84	10	71	81
RETAIL	30	29	59	40	38	78
<b>TOTAL</b>	<b>109</b>	<b>51</b>	<b>160</b>	<b>61</b>	<b>120</b>	<b>181</b>
<b>"INTERPLAY" %</b>	<b>7%</b>	<b>10%</b>	<b>8%</b>	<b>14%</b>	<b>9%</b>	<b>10%</b>

PHASE 2 - "INTERPLAY"	WEEKDAY PEAK AM HOUR			WEEKDAY PEAK PM HOUR		
	ENTRY	EXIT	TOTAL	ENTRY	EXIT	TOTAL
HOTEL	10	7	17	11	11	22
OFFICE / BIO-TECH	306	79	385	54	344	398
RETAIL	55	47	102	71	70	141
<b>TOTAL</b>	<b>371</b>	<b>133</b>	<b>504</b>	<b>136</b>	<b>425</b>	<b>561</b>
<b>"INTERPLAY" %</b>	<b>25%</b>	<b>27%</b>	<b>26%</b>	<b>32%</b>	<b>30%</b>	<b>30%</b>



NOTE: LINE DIAGRAM NOT TO SCALE

**MASER**  
CONSULTING P.A.

Customer Loyalty through Client Satisfaction  
www.maserconsulting.com

Engineers ■ Planners ■ Surveyors  
Landscape Architects ■ Environmental Scientists

State of N.Y. Cert. of Authorization: 0008671/0008821

Office Locations:

- Red Bank, NJ
- Clinton, NJ
- Hamilton, NJ
- Egg Harbor, NJ
- Montvale, NJ
- Mt. Laurel, NJ
- Albany, NY
- Newburgh, NY
- Westchester, NY
- Columbia, MD
- Lehigh Valley, PA
- Exton, PA
- Philadelphia, PA
- Pittsburgh, PA
- Tampa, FL
- Orlando, FL
- Miami, FL
- Sterling, VA
- Norfolk, VA
- Albuquerque, NM
- Charlotte, NC

Copyright © 2019, Maser Consulting P.A. All Rights Reserved. This drawing and all the information contained herein is authorized for use only by the party for whom the services were contracted or to whom it is certified. This drawing may not be copied, reused, disclosed, distributed or relied upon for any other purpose without the express written consent of Maser Consulting P.A.

REV	DATE	DRAWN BY	DESCRIPTION

**NORTH 60**

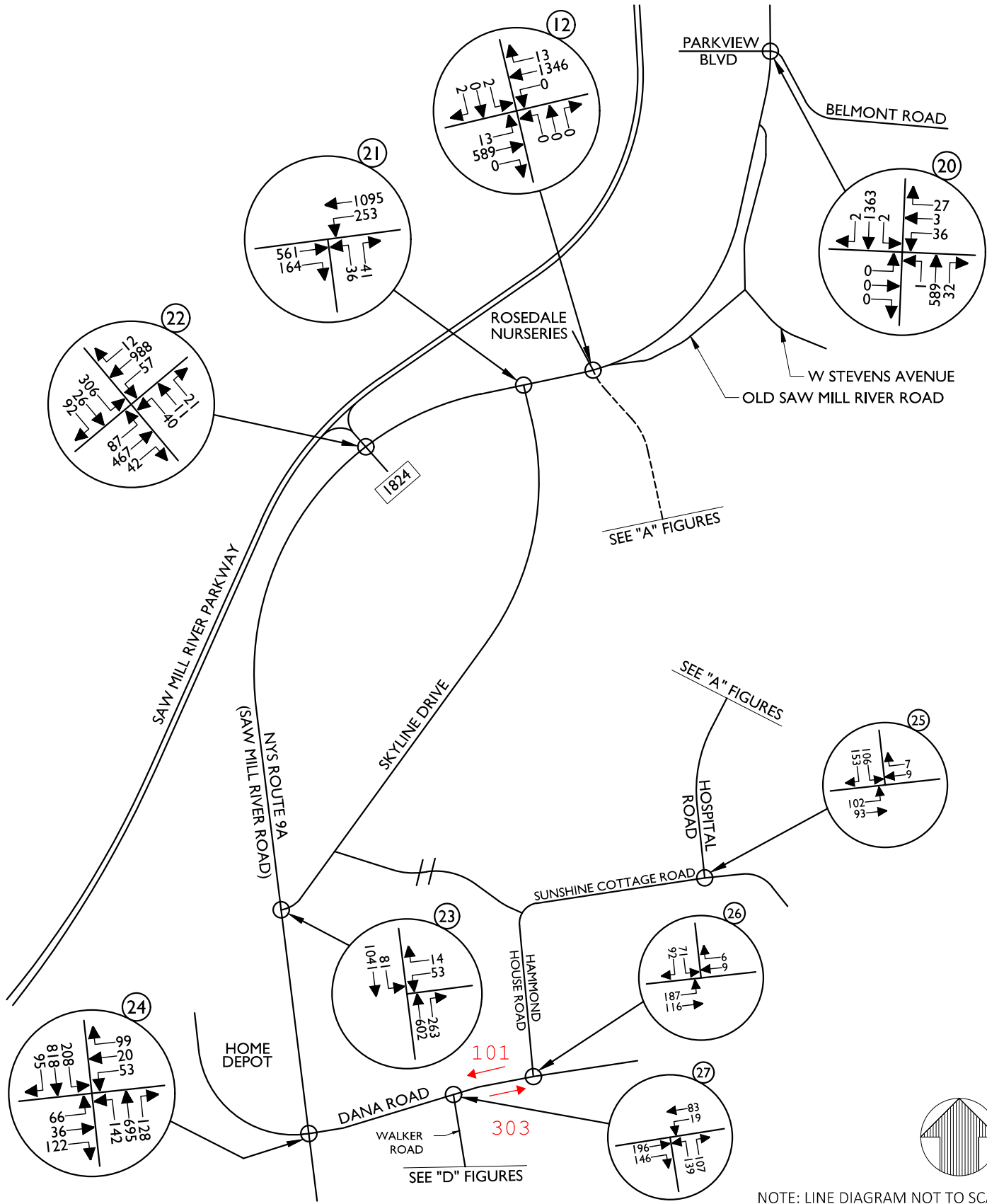
TOWN OF MOUNT PLEASANT  
WESTCHESTER COUNTY  
NEW YORK

Know what's below.  
Call before you dig.  
FOR STATE SPECIFIC DIRECT PHONE NUMBERS VISIT: WWW.CALL811.COM

**PROTECT YOURSELF**  
ALL STATES REQUIRE NOTIFICATION OF EXCAVATORS, DESIGNERS, OR ANY PERSON PREPARING TO DISTURB THE EARTH'S SURFACE ANYWHERE IN ANY STATE

**WESTCHESTER OFFICE**  
400 Columbus Avenue  
Suite 180E  
Valhalla, NY 10595  
Phone: 914.347.7500  
Fax: 914.347.7266

TRAFFIC IMPACT STUDY			
SCALE AS SHOWN	DATE 9/13/19	DRAWN BY: N.S.T.	CHECKED BY: J.T.C.
PROJECT NUMBER 17003592B	DRAWING NAME 190917_FM_HOSPITAL CORRIDOR FIGURES A		
SHEET TITLE: 2024 NO-BUILD TRAFFIC VOLUMES WEEKDAY PEAK AM HOUR			
SHEET NUMBER: FIGURE NO. 8-A			

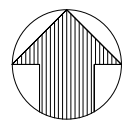


SEE "A" FIGURES

SEE "A" FIGURES

SEE "D" FIGURES

NOTE: LINE DIAGRAM NOT TO SCALE



Customer Loyalty through Client Satisfaction  
 www.maserconsulting.com  
 Engineers ■ Planners ■ Surveyors  
 Landscape Architects ■ Environmental Scientists  
 State of N.Y. Cert. of Authorization: 0008671/0008821  
 Copyright © 2019, Maser Consulting P.A. All Rights Reserved. This drawing and all the information contained herein is authorized for use only by the party for whom the services were contracted or to whom it is certified. This drawing may not be copied, reused, disclosed, distributed or relied upon for any other purpose without the express written consent of Maser Consulting P.A.

- NEW JERSEY
  - Red Bank
  - Clinton
  - Hamilton
  - Egg Harbor
  - Manville
  - Mt. Arlington
- NEW YORK
  - Albany
  - New Windsor
- MARYLAND
  - Annapolis
- TEXAS
  - College Station
- FLORIDA
  - Tampa
  - Orlando
  - Miami
- PENNSYLVANIA
  - Lehigh Valley
  - Exton
  - Philadelphia
  - Stroudsburg
- VIRGINIA
  - Sterling
  - Norfolk
- TENNESSEE
  - Nashville
- INDIANA
  - Lafayette
- COLORADO
  - Denver

## NORTH 60

TOWN OF MOUNT PLEASANT  
 WESTCHESTER COUNTY  
 NEW YORK



PROTECT YOURSELF  
 ALL STATES REQUIRE NOTIFICATION  
 OF EXCAVATORS, DESIGNERS, OR  
 ANY PERSON PREPARING TO  
 DISTURB THE EARTH'S SURFACE  
 ANYWHERE IN ANY STATE  
 Know what's below.  
 Call before you dig.  
 FOR STATE SPECIFIC DIRECT PHONE NUMBERS  
 VISIT: WWW.CALL811.COM



WESTCHESTER OFFICE  
 400 Columbus Avenue  
 Suite 180E  
 Valhalla, NY 10595  
 Phone: 914.347.7500  
 Fax: 914.347.7266

### TRAFFIC IMPACT STUDY

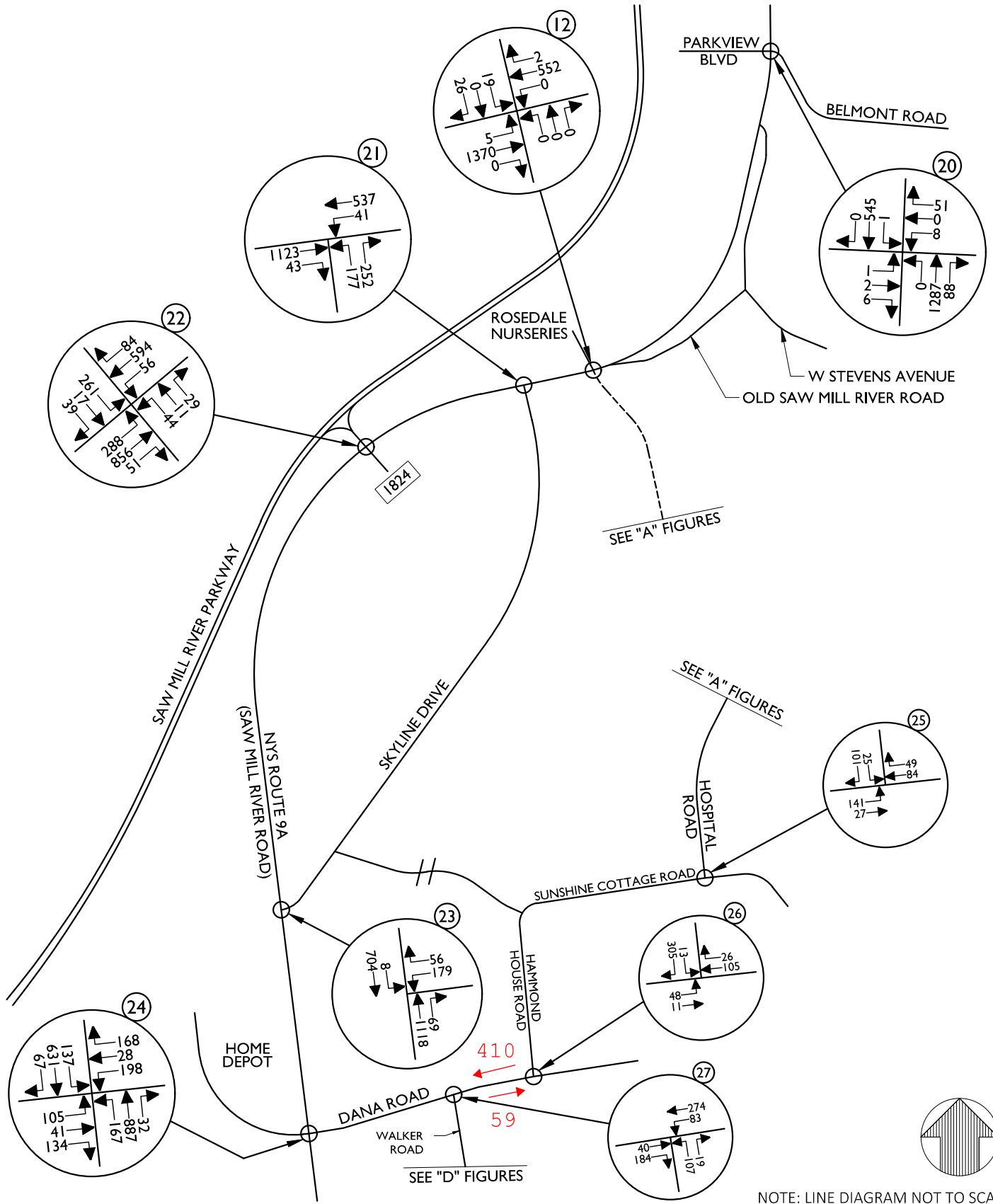
SCALE: AS SHOWN	DATE: 9/13/2019	DRAWN BY: N.S.T.	CHECKED BY: J.T.C.
PROJECT NUMBER: 17003592B		DRAWING NAME: 190917_JFM_9A CORRIDOR FIGURES C	

SHEET TITLE:  
 2024 NO-BUILD TRAFFIC VOLUMES  
 WEEKDAY PEAK AM HOUR

SHEET NUMBER:  
**FIGURE NO. 8-C**







NOTE: LINE DIAGRAM NOT TO SCALE

**MASER CONSULTING P.A.**

Customer Loyalty through Client Satisfaction  
www.maserconsulting.com

Engineers ■ Planners ■ Surveyors  
Landscape Architects ■ Environmental Scientists

State of N.Y. Cert. of Authorization: 0008671/0008821

Copyright © 2019, Maser Consulting P.A. All Rights Reserved. This drawing and all the information contained herein is authorized for use only by the party for whom the services were contracted or to whom it is certified. This drawing may not be copied, reused, disclosed, distributed or relied upon for any other purpose without the express written consent of Maser Consulting P.A.

- NEW JERSEY**
  - Red Bank
  - Clinton
  - Hamilton
  - Manville
  - McKeesport
  - Millersburg
  - Northampton
  - Northampton
  - Northampton
- FLORIDA**
  - Tampa
  - Orlando
  - Miami
  - Jacksonville
- PENNSYLVANIA**
  - Lehigh Valley
  - Exton
  - Pittsburgh
  - Scranton
  - Raleigh
- NEW YORK**
  - Albany
  - New Windsor
- NORTH CAROLINA**
  - Charlotte
  - Raleigh
- VIRGINIA**
  - Roanoke
  - Norfolk
- TENNESSEE**
  - Nashville
  - Memphis
- INDIANA**
  - Lafayette
- COLORADO**
  - Denver
- NEW YORK**
  - Albany
  - New Windsor
- NEW MEXICO**
  - Albuquerque
- MARYLAND**
  - Columbia
- TEXAS**
  - College Station

**NORTH 60**

TOWN OF MOUNT PLEASANT  
WESTCHESTER COUNTY  
NEW YORK

**811** PROTECT YOURSELF  
ALL STATES REQUIRE NOTIFICATION OF EXCAVATORS, DESIGNERS, OR ANY PERSON PREPARING TO DISTURB THE EARTH'S SURFACE ANYWHERE IN ANY STATE

Know what's below.  
Call before you dig.  
FOR STATE SPECIFIC DIRECT PHONE NUMBERS VISIT: WWW.CALL811.COM

**WESTCHESTER OFFICE**  
400 Columbus Avenue  
Suite 180E  
Valhalla, NY 10595  
Phone: 914.347.7500  
Fax: 914.347.7266

TRAFFIC IMPACT STUDY			
SCALE: AS SHOWN	DATE: 9/13/2019	DRAWN BY: N.S.T.	CHECKED BY: J.T.C.
PROJECT NUMBER: 17003592B	DRAWING NAME: 190917_JFM_9A CORRIDOR FIGURES C		
SHEET TITLE: 2024 NO-BUILD TRAFFIC VOLUMES WEEKDAY PEAK PM HOUR			
SHEET NUMBER: FIGURE NO. 9-C			

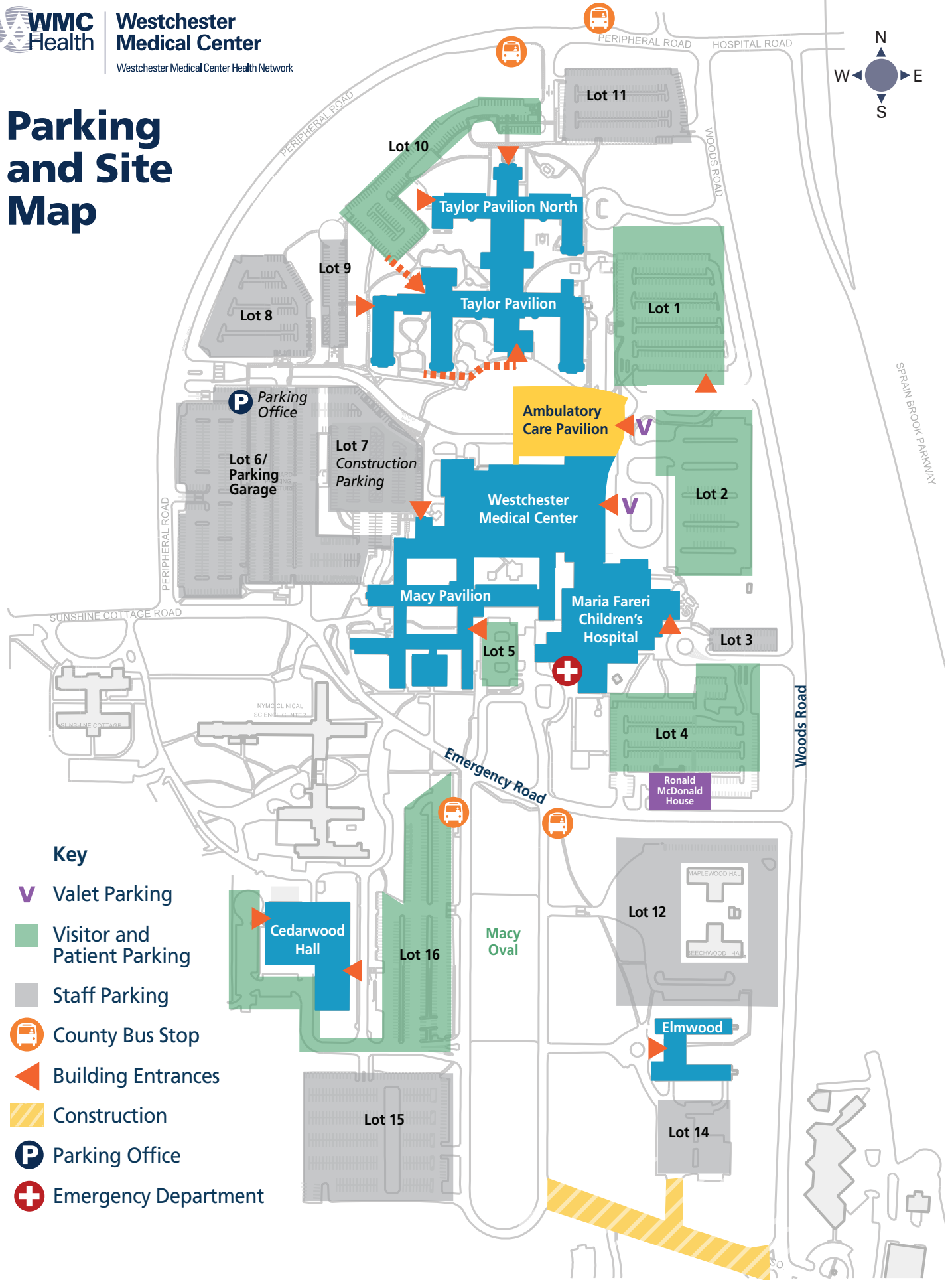




**Westchester Medical Center**

Westchester Medical Center Health Network

# Parking and Site Map



**ABOUT US****For The Press****Media Center****Board Of  
Directors****Hospital  
Leadership****Mission Goals  
And Vision****Ambulatory  
Care Pavilion****Public Authority  
Reporting****Procurement  
Opportunities**

## About Us

The flagship of WMCHHealth, Westchester Medical Center is a 415-bed academic hospital, one of three hospitals located on the network's Valhalla, NY campus. Founded in 1917, Westchester Medical Center is the regional hub of tertiary and quaternary care and is the primary referral facility for other hospitals, serving as a lifeline for more than 2.4 million people in the Hudson Valley. Westchester Medical Center's mission is to provide the highest quality care for all residents of the Hudson Valley, regardless of their ability to pay, providing a network that ensures access to a coordinated continuum of care for its community.

Westchester Medical Center provides local residents with acute care services –adult and pediatric Level I trauma and burn care; organ transplantation, highest-risk OB-GYN care; advanced neurosurgical procedures and more – found nowhere else in the Hudson Valley. With a long-term academic affiliation with New York Medical College, which shares our Westchester Medical Center campus in Valhalla, WMCHHealth is committed to training the next generation of healthcare professionals and integrating research to advance treatment, expand knowledge and improve lives.

Outpatient care is available to all Hudson Valley residents in the new, eight story Ambulatory Care Pavilion. A \$230 million investment in the health and well-being of Hudson Valley residents, the 260,000-square-foot Ambulatory Care Pavilion is now providing the highest quality ambulatory care utilizing the latest healthcare technologies. The Ambulatory Care Pavilion houses the WMCHHealth Heart and Vascular Institute, Advanced Imaging Center, and an ambulatory surgery center, among other services. The Ambulatory Care Pavilion includes world-leading technologies, including a quenchless MRI machine – the only one of its kind in the northeast and only the second in the United States – and one of only a few spectral-detector-based CT devices in North America.\*

Westchester Medical Center is emphasizing an enhanced “environment of care” in the Ambulatory Care Pavilion that reduces stress and promotes healing with amenities such as ambient lighting and sounds, and private spaces.

\* According to Philips, 2019.

**ABOUT US****For The Press****Media Center****Board Of  
Directors****Hospital  
Leadership****Why Choose  
Maria Fareri  
Children's  
Hospital****Facts and  
Statistics****Children's  
Miracle Network  
Hospital**

# Facts and Statistics

## Overview and Mission

Our goal at Maria Fareri Children's Hospital, a member of the Westchester Medical Center Health Network (WMCHealth), is to make all children healthy and happy. Every day, our dedicated staff of physicians, nurses, allied health practitioners, technicians and others helps us to attain that goal by providing advanced life-saving care to thousands of children in the Hudson Valley region.

Our mission is to set the standard for family-centered, compassionate care in a state-of-the-art environment that attracts outstanding physicians and staff, and which promotes healing, wellness and knowledge for all children and their families. We are advocates for children's health and wellness and actively promote health education and activities within the hospital and the community at large.

## Compassionate, Family-Centered Care

Recognized as a leader in advanced pediatric care, Maria Fareri Children's Hospital operates under a "family-centered care" approach to treating children. This philosophy involves parents, siblings and family members in every step of a child's treatment, and is provided in a state-of-the-art building designed specifically from the point of view of children and their families. Our hospital philosophy is that family-centered care and active family involvement create an environment specially suited to enable medical specialists to provide the most advanced care to their patients and to facilitate the healing process, regardless of the illness.

## Teaching the Healthcare of Tomorrow

As part of Westchester Medical Center, an academic health affiliate of [New York Medical College](#), Maria Fareri Children's Hospital is also a major teaching facility. Our dedicated staff of more than 150 pediatric specialists is involved in research, developing tomorrow's treatments and in training the children's health care providers of tomorrow in the arts and sciences of pediatric medical care. This is delivered under a philosophy that acknowledges that families are important participants on the team at the Children's Hospital. Family-centered care is at the core of our mission and all Children's Hospital students, residents and other trainees learn that the active involvement of families in the healing process - whatever the illness - is an important part of helping children recover and stay well.

**ABOUT US****For The Press****Media Center**

## About Us

WMCHHealth Behavioral Health Center has been a leading provider of comprehensive behavioral health services for the Hudson Valley for more than 90 years. Over the past three years, WMCHHealth has robustly expanded to include hospitals and outpatient offices in eight counties throughout the Hudson Valley. As the region's leading provider of Mental Health Services, we offer a full spectrum of inpatient, outpatient, community and emergency care for individuals and families. World-renowned medical services provided by WMC, combined with strong clinical leadership from the Department of Psychiatry at New York Medical College, keep the Behavioral Health Center at the forefront of meeting the needs of those affected by mental illness

---

## Our Mission

The Ronald McDonald House of the Greater Hudson Valley is committed to **keeping families with sick or injured children close to each other and to the care and resources they need.**

We achieve our mission through the quality, experience, and dedication of our staff and volunteers, as well as support from our community and local businesses.

## Our Vision

Our vision is to be recognized within the tri-state and Hudson Valley Region as an organization that makes a significant contribution to improving the lives of children and their families by:

- increasing access to health care for families with children in need
- ensuring efficient and effective use of resources to advance our mission
- celebrating diversity of our people and programs
- operating with accountability and transparency



# NYMC by the numbers

**2,056** Students  
*on the NYMC campus and online*

**375** Residents and Fellows  
**22** Residency Programs

## SCHOOLS ON THE NYMC CAMPUS

**5**

- School of Medicine
- School of Health Sciences and Practice
- Graduate School of Basic Medical Sciences
- Touro College of Dental Medicine
- Touro College School of Health Sciences nursing program

**504**  
BEDS  
NYMC STUDENT HOUSING CAPACITY

**22**  
COUNTRIES REPRESENTED



**125,000+**  
Journal titles and databases in the Health Sciences Library



FACULTY/STUDENT RATIO: 1:1

**45** ACADEMIC PROGRAMS  
*campus-wide*

### College-wide Diversity:

- NYMC students self-reported as members of the following groups:

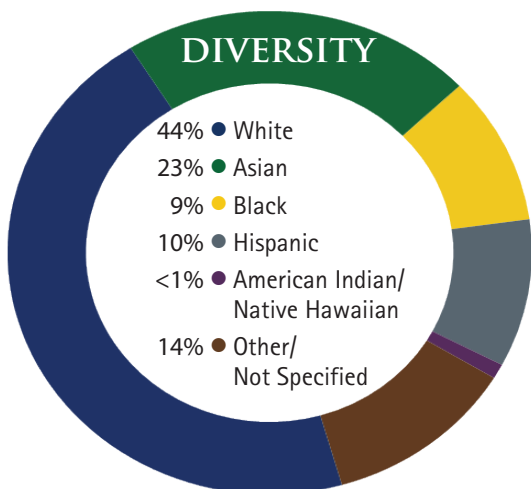
**2,500+**  
FACULTY  
*campus-wide*

1,233 Full-time;  
428 Part-time;  
807 Affiliate/  
Volunteer;  
45 Living emeriti



**1,505** employees  
*campus-wide*

**FOUNDED 1860**



**24,700+** LIVING ALUMNI

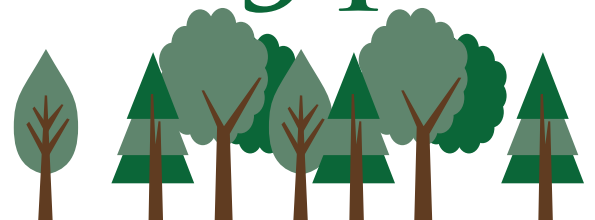
who are actively engaged in medical practice, health care administration, public health, teaching and research throughout the nation and abroad.

**~129,000**  
square feet



Total square footage dedicated to research

CAMPUS SIZE **54** ACRES



# Commissioner's Message

The Westchester County Department of Correction (WCDOC) is the one of the largest county jail complexes in New York State. Our core mission is to ensure the safety of staff, offenders and the general public and to comply with all legal mandates, professional standards and 'best practices' nationwide. In doing so, our agency provides secure, humane, and efficient confinement of pre-trial detainees and sentenced inmates, while also ensuring professionalism, compassion, accountability, cohesiveness, inclusion and diversity.



To support our mission, we have implemented the highest national standards into our daily operations, utilizing technological advancements and unique reentry programs that combat recidivism, streamline services and contain costs.

Recognized as a national leader by the American Correctional Association (ACA) and the National Commission on Correctional Health Care (NCCHC), our 200-plus policies comply with the most stringent standards for jails and prisons nationwide. Since 2009, WCDOC has maintained the distinction as the only large jail in New York State with dual ACA and NCCHC accreditation. Operating in this manner enhances overall safety, training, inmate programs and services and improves facility health and sanitation conditions for both staff and offender.

From the Commissioner's office to our housing areas, each and every uniformed staff member takes great pride in our operation. Similarly, our healthcare representatives, teachers, spiritual care team, support staff and volunteers directly enhance our ability to provide a wide array of services to the population we serve. In doing so, we strive to rehabilitate inmates and combat recidivism through unique programs and services centered on education, vocational training, substance abuse, violence reduction, spirituality and a return to home communities. I am proud that our collective rehabilitation and reentry efforts have resulted in many success stories, where individuals have returned to their home communities healthier, more productive and prepared for future challenges.

For more information about our agency, revisit our home page and [contact us](#) if you have any questions.

Thank you,  
Commissioner Joseph K. Spano